



JUNIOR SERIES



Ref. MX022

TECHNICAL DATA

OUTPUT MAX	270 W
MIXER SPEED	11,000 R.P.M.
WHISK SPEED	1,500 R.P.M.
VOLTAGE	115 V or 230 V
TOTAL LENGHT	505 mm / 19.8"
LONGUEUR TUBE	225 mm / 9"
SHAFT LENGTH	185 mm / 7.3"
DIAMETER	94 mm / 3.7"
ACTUAL WEIGHT - SHIPPING WEIGHT	3 kg / 6.6 lbs 3,2 kg / 7 lbs
TOOLS	DETACHABLE

MAINTENANCE

Mixer: Clean the outside of the tube and the blade protector by passing it under the faucet.

Whisks: Dismantle whisks from their attachments by pushing strongly on the cups, then you can securely rinse the whisks under running water.

Wash the motor block with a sponge or with a slightly damp cloth.

Never clean this machine with a water jet spray.



Mixer

Whisks



1.25 / 6.5 gal. 0.25 / 1.25 gal.

ADVANTAGES

- Lightweight, sturdy and handy
- Safety button
- Double insulation
- Stainless steel mixer tube and guard for easy cleaning and perfect hygiene
- Detachable mixer and whisks tools for easy cleaning and maintenance
- Titanium-plated blade easy to remove
- Variable speed as standard



USE

Mixer: Indispensable for the preparation of soups, salad dressings, gravies, sauces, mayonnaise, refried beans and many other applications.

Capacity: 5 to 25 L / 1.25 to 6.5 gal.

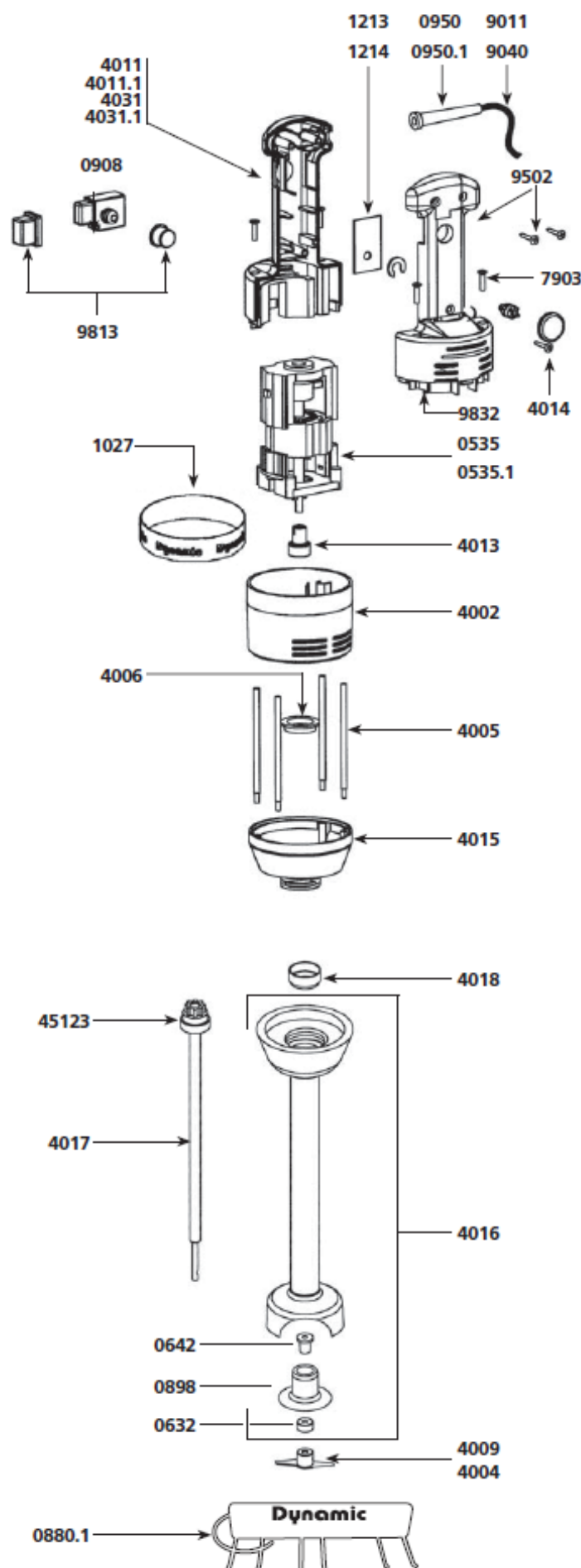
Whisks: For easy preparation of batters, creams, mousseline sauces and whipped egg whites.

Capacity: 1 to 5 L / 0.25 to 1.25 gal.



TECHNICAL SHEET

JUNIOR PLUS AND JUNIOR COMBI MIXERS



Power Unit

Parts list

Code

Stator 230 V	0535
Stator 115 V	0535.1
Wall bracket	0880.1
Non-locking switch	0908
Strain relief 230 V	0950
Strain relief 115 V	0950.1
Dynamic label	1027
Id label (Junior Plus) 230V	1084
Id label (Junior Plus) 115V	1085
Id label (Junior Combi) 230V	1086
Id label (Junior Combi) 115V	1087
Speed variator 230V	1213
Speed variator 115V	1214
Upper motor housing	4002
Braces (4)	4005
Ball bearing ring	4006
Complete handle w/ power cord 230V	4010
Complete handle w/ power cord 115V	4010.1
Lower half handle w/ Junior Plus label 230V	4011
Lower half handle w/ Junior Plus label 115V	4011.1
Filtering capacitor	4012
Coupling	4013
Speed variator knob	4014
Lower aluminium motor housing	4015
Complete handle w/ power cord 230V	4030
Complete handle w/ power cord 115V	4030.1
Lower half handle w/ Junior Combi label 230V	4031
Lower half handle w/ Junior Combi label 115V	4031.1
Carbon brushes (2) 230 V	4050
Carbon brushes (2) 115 V	4050.1
Brace screws (4)	7903
Power cord 230 V	9011
Power cord 115 V	9040
Power cord (Australian)	9066
Power cord (UK)	9067
Handle screws (3)	9502
Switch protector	9813
Upper half handle Junior Plus & Junior Combi	9832
Complete motor block (see machine catalogue)	AC100

Complete foot assembly

Parts list

Code

Waterproof seal	0632
Self-lubricating ring	0642
Bearing only	0898
Cutter blade	4004
Emulsifying blade	4009
Foot assembly with bearing	4016
Kit w/ shaft lower ball bearing and coupling	4017
Ball bearing ring	4018
Coupling hub	45123
Complete Junior foot (see machine catalogue)	AC101

JUNIOR COMBI MIXER

Whisk tool

Parts list

Code

Ball bearing	0601
Pins 3 x 10	0638
Pins 3 x 14	0745
Open head locking washer (unit)	0766
Entry gear	0837A
Lower motor whisk housing	4019
Equipped upper shaft (complete)	4020
Plate w/ seals and screws	4021
Holder assembly screws (4)	4022
Reduction gear assembly	4025
Middle gear & shaft	9420
Equipped output axle w/ 2 gears+pins	9421
Holder assembly w/ 3 self-lubricating rings	9422
Whisk tool (2)	9424
Coupling hub	45123
Upper driving shaft	089947
Complete Junior Whisk tool (see machine catalogue)	AC102

